



## Pre-Congress Course

### Dysphagia in Critical Care and Respiratory Disease

#### Thursday 27th September

The pre-congress course will focus on the assessment and management of swallowing disorders in critical care and respiratory disease. The course aims to provide delegates with the knowledge necessary to deliver care in these settings according to current best practice. Topics and speakers are being updated all the time, so please check back regularly.

#### Programme

Delegates will attend plenary sessions delivered by leading experts in the field. Each session will include time for discussion and questions to enhance learning.

Topics will include:

- Prevalence and nature of dysphagia
- Multidisciplinary management of dysphagia
- Current guidelines and future directions for patient care
- Dysphagia management in chronic respiratory disease

[Please scroll down to view the programme](#)

## Confirmed Speakers Include:

### [Martin Brodsky](#)

Martin B. Brodsky, Ph.D., Sc.M., CCC-SLP, F-ASHA, is an Associate Professor of Physical Medicine and Rehabilitation at Johns Hopkins University, School of Medicine. His peer-reviewed research publications and book chapters focus on swallowing and swallowing disorders.

Dr. Brodsky's clinical research is funded by the National Institutes of Health, studying the effects of critical illness and critical care medicine on swallowing and the airway and their long-term outcomes. His clinical practice specializes in adult swallowing and communication disorders.

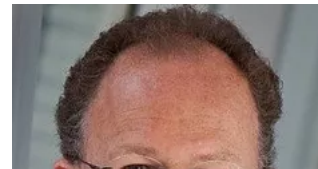
Dr. Brodsky is a Fellow of the American Speech-Language-Hearing Association and a member of the Editorial Board for Dysphagia. He is a frequent reviewer for scientific journals and grant applications. Professional memberships include Dysphagia Research Society and the American Psychological Association.



### [Peter Spronk](#)

Peter E. Spronk is Staff Physician and Head of the expertise centre for longterm outcomes in the critically ill of the ICU department at the University affiliated Gelre Hospitals in Apeldoorn, The Netherlands. He is also a Research Associate at the department of ICU at the Academic Medical Center in Amsterdam, The Netherlands. Dr. Spronk finished training in general internal medicine at the Free University of Amsterdam in 1999 and subsequent training in intensive care medicine (EDIC program) in 2001. He has actively participated in all of Dale Needham's early mobility symposia at ATS since 2006, has been a member of the Board of European Conference of Weaning and Rehabilitation since 2015, and a member of the ATS and the Critical Care Assembly since 2007.

Dr. Spronk's research is focussed on the longterm outcome trajectories of ICU patients and potentially modifiable behavioural issues during ICU stay like pain, agitation, delirium, early mobility, sound, sleep, cognitive stimulation, and end-of-life care and has extensively published on these subjects. His hospital was one of the first to organize a formal follow-up ICU outclinic in The Netherlands. Currently, Dr. Spronk is working on several studies on dysphagia in the critically ill and is supervising PhD students on this subject in collaboration with the Radboud University in Nijmegen, The Netherlands.



Dr. Spronk has always worked together with several professional societies like ATS, SCCM, ANZICS, and ESICM to improve the active participation of international members by sharing information and building bridges.

### Judith Merriweather

Judith Merriweather is a clinical academic dietitian in the Department of Critical Care at the Royal Infirmary of Edinburgh. Judith has worked as a critical care dietitian for the last 20 years and has undertaken a PhD which explored the factors that influence nutritional intake after ICU. She was awarded an NHS Research Scotland (NRS) fellowship to develop a patient-centred strategy to promote nutritional recovery after critical illness. Judith is part of the Edinburgh Critical Care Research Group and was involved in the RECOVER study, a randomized clinical trial that looked at the effect of providing increased hospital-based physical rehabilitation and information provision in ICU survivors. Her research interests include nutrition in and after ICU, muscle wasting and recovery in long term ICU patients.



### Jessica Pisegna

Jessica Pisegna is an ASHA certified Speech Language Pathologist. Her clinical practice centers on rehabilitation of adult swallowing, voicing, and speech disorders in the outpatient and inpatient settings. She focuses her research on adult evaluation and treatment methodology as it relates to clinical outcomes. In 2017, Dr. Pisegna became the director for clinic and research for the Speech Language Pathology section under the Department of Otolaryngology at Boston Medical Center where she is part of an interdisciplinary team dedicated to the clinical care and research of voice and swallowing outcomes in adults. Dr. Pisegna has numerous publications and regularly contributes presentations to scientific and clinical forums.



### Jackie McRae

Jackie McRae, Ph.D, MRCSLT, HCPC, is Consultant Speech and Language Therapist and Professional Lead for Speech and Language Therapy at St George's University Hospitals NHS Foundation Trust, London. She has over 25 years' experience working with adults with acquired dysphagia in teaching and specialist hospitals in and around London. Whilst working with complex spinal cord injury patients at the London Spinal Cord Injury Centre she developed effective weaning strategies as part of the multi-disciplinary tracheostomy team using flexible nasendoscopy to evaluate laryngeal function and optimise patients' speech and swallowing functions. After successfully completing an MClinRes, Jackie was awarded an NIHR clinical doctoral research fellowship, investigating the early identification and management of dysphagia in acute cervical spinal cord injury, known as the DAISY project ([www.daisyproject.info](http://www.daisyproject.info)). This year she won the national NIHR Research Champion Award for AHPs in recognition of her engagement with patients and other clinicians in developing research.



She is a professional advisor to the Royal College of Speech and Language Therapists and chair of the strategic group for SLTs working in critical care aiming to raise standards of practice. As an AHP committee member of the Intensive Care Society she aims to increase awareness of the role of SLTs in critical care and improve collaborative working. She uses social media to link up with groups and individuals to share and promote best practice.

Twitter: @daisy\_project; @CriticalCareSLT

### Alexandre Demoule

Alexandre Demoule is professor of intensive care medicine at the Sorbonne University Medical Centre in Paris. He is the medical director of the medical intensive care unit, the step down unit and the weaning centre within the Department of Pneumology and Intensive Care Medicine, La Pitié-Salpêtrière University Hospital in Paris. He is the chair of the European Research Network on Mechanical Ventilation (REVA).

His main research field is patient-ventilator interactions. It involves specific research topics such as brain-ventilator interactions, the impact of mechanical ventilation on respiratory sensations and comfort and respiratory muscles dysfunction in mechanically ventilated patients. He also conducts clinical studies on non-invasive mechanical ventilation in acute respiratory failure, on new modes of mechanical ventilation and on acute respiratory failure in immunocompromised patients.



### Ulrike Frank

Ulrike Frank, Ph.D. is a Speech and Language Therapist and Associate Researcher at the University of Potsdam, Germany. Her clinical practice focuses on adults and children with dysphagia, speech disorders and respiratory disease in early neurorehabilitation inpatient and outpatient settings in Germany and Switzerland.

In her Ph.D. research she developed an interdisciplinary tracheostomy weaning and decannulation concept. Since 2009, she is the founder and leader of the Swallowing Research Lab at the University of Potsdam; a research and education facility that supports and encourages students to develop their clinical and research skills on a strong multidisciplinary basis.

Dr. Franke's research interests include: development of respiratory intervention concepts for dysphagia and tracheostomy management, implementation of biofeedback methods and principles of motor learning into dysphagia and speech and language therapy, and invention of educational and training materials for patients and multidisciplinary clinical teams.

Dr. Franke is co-chair of the ethics committee and editor of the scientific journal of the German Association of Academic Speech Language Therapists (dbs), reviewer of scientific journals and grant applications and has published and presented her work in many journals, books and scientific and clinical meetings.



## Preliminary Programme, Thursday 27th September

Please note that the schedule is subject to change

### 8:30 - 10:30 Critical Care: Dysphagia Epidemiology and Assessment Considerations

8:30 - 8:45	Welcome
8:45 - 9:00	Dysphagia in the Critical Care Patient: Aetiology and Risk Factors
9:00 - 9:15	Clinical Swallowing Evaluation in Critically Ill Patients in ICU
9:15 - 9:45	FEES in the ICU: Challenges and Opportunities
9:45 - 10:15	Management of Aspiration Pneumonia in ICU
10:15 - 10:30	Panel Discussion/Q&A

## 10.30-11.00 Coffee Break

### 11:00 - 13:00 Dysphagia Rehabilitation in Critical Care

11:00 - 11:30	Multidisciplinary management of the critically ill ICU patient
11:30 - 11:45	Nutritional Considerations in the Acute Phase of Critical Illness
11:45 - 12:15	Management of Post Extubation Dysphagia
12:15 - 12:30	Dysphagia in Critically Ill Patient: Current Awareness and Practice
12:30 - 12:45	Future Directions in Management of Dysphagia in the Critically Ill Patient
12:45 - 13:00	Panel Discussion/Q&A

## 13:00 - 14:00 Lunch & Symposium

### 14:00 - 15:30 Dysphagia in Chronic Respiratory Disease

14:00 - 14:30	Dysphagia in Chronic Respiratory Disease: Nature and Risk Factors
14:30 - 14:45	Challenges in the Assessment of Patients with Dysphagia Associated with Respiratory Disease
14:45 - 15:00	Cough Reflex Testing: State of the Art and Clinical Applications
15:00 - 15:15	Management of Children with Chronic Wet Cough: Current Guidelines
15:15 - 15:30	Panel Discussion/Q&A



Top

## 15:30 - 16:00 Coffee Break

### 16:00 - 17:00 Interventions for Dysphagia in Chronic Respiratory Disease

16:00 - 16:15	Compensatory Strategies for Dysphagia in Respiratory Disease
16:15 - 16:30	Respiratory-Swallow Training as a Swallowing Intervention
16:30 - 16:45	Respiratory Strength Training: What is the Evidence?
16:45 - 17:00	Panel Discussion/Q&A

### 17:00 - 18:00 General Assembly: ESSD General Assembly for members

18:00 - 19:00 Welcome Reception



© 2018 by Abbey Group